



# Designer Manufacturer

## SOUNDPROOFING



### TGC

Soundproofed protective enclosure for large format thermal printers

Characteristics:

- The enclosure body consists of a single thermoplastic unit so that the front, side and rear are part of the same structure;
- Panels made from 10 mm thick composite material, dyed in the mass;
- Connections: 80 mm diameter cable port;
- Acoustic foam to reduce noise by up to 50 %.

Left side:

- Inlet grille equipped with filter to trap the dust.

Rear panel:

- Fan;
- The computer hardware is powered up when the enclosure (fan) is switched on via a switch.

Right side: Handling:

- Side access to thermal printer;
- Enclosure opening & closing:
- Side panel folds down, fitted on piano hinge and closed with two latches;
- Thermoformed cover with PVC strengthener to improve the strength of the panel:
  - Cover closes against drop-down flap fitted with lip seals;
  - Fitted with hinges and opening assisted by two gas springs.

Front panel:

- Printer controls and labels accessed via the front panel using a 6 mm thick PMMA (transparent thermoplastic) fold-down flap;

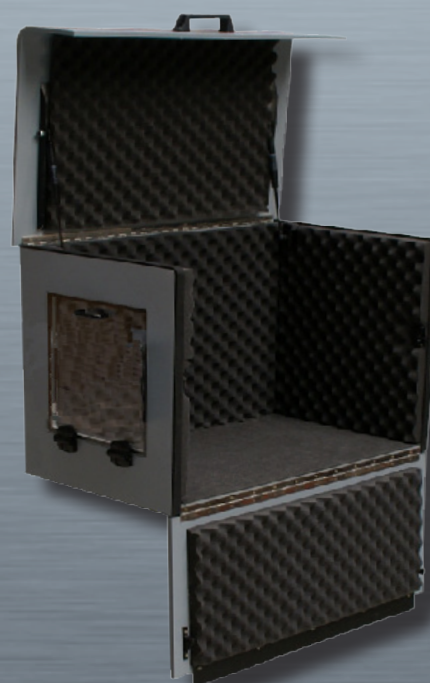
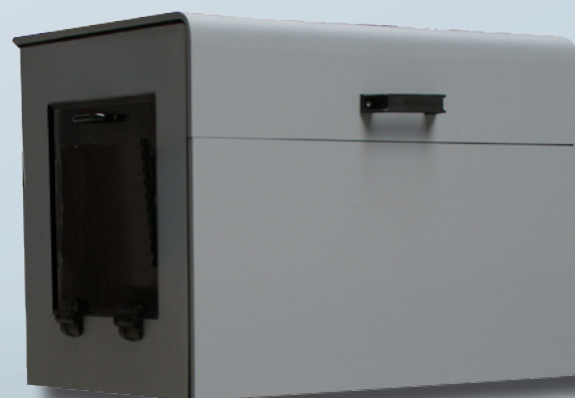
- Advantages:
- Physical and thermal protection
  - Optimum noise reduction
  - Suitable for large format thermal printers

Standard version available: TGC

SOUNDPROOFING TGC DIMENSIONS (mm):

Overall outer dimensions W 450 x D 750 x H 500 mm

Useful inner dimensions W 380 x D 680 x H 460 mm

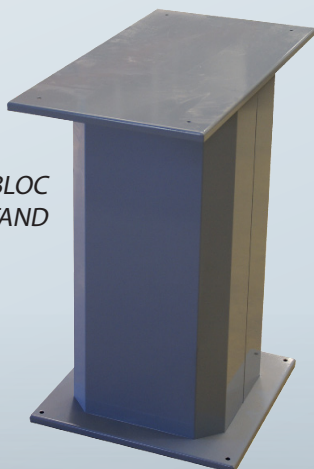


# Fixed and mobile workstations

## DESCRIPTION OF OPTIONS

*The protection and  
soundproofing system  
for large format thermal printers*

MONOBLOC  
STAND



### MONOBLOC STAND option

- RAL 7035 grey painted steel stand. Available in two sizes:
  - Height: 680 mm;
  - Height: 960 mm.

Slot  
LABEL SLOT + GUIDE



### LABEL SLOT options

- LABEL SLOT + GUIDE: Slot in the PMMA flap on the front with guide for easy handling of labels;
- TAV: Inspection port in unbreakable polycarbonate  
Available in two sizes (mm):
  - TAV L 12: L 220 x H 100;
  - TAV L 24: L 220 x H 190.



Slot  
model  
TAV